

Cedara CalScore®



2006-02739 V.2.0



Screening Coronary Artery Disease

Coronary disease represents a growing concern for people around the world. For many patients, the first sign of Coronary Artery Disease can be a heart attack. According to the US Department of Health and Human Services, approximately 13 million people in the United States have coronary artery disease (CAD). It is the leading cause of death in both men and women in this country. Today, in an effort to detect CAD as early as possible, many healthcare professionals are turning to tests such as Calcium Scoring. Performed using a CT Scanner, calcium scoring provides an excellent means for physicians to visualize plaque build-up in coronary arteries, and calculate a Calcium Score to predict risk of clinical coronary artery disease.



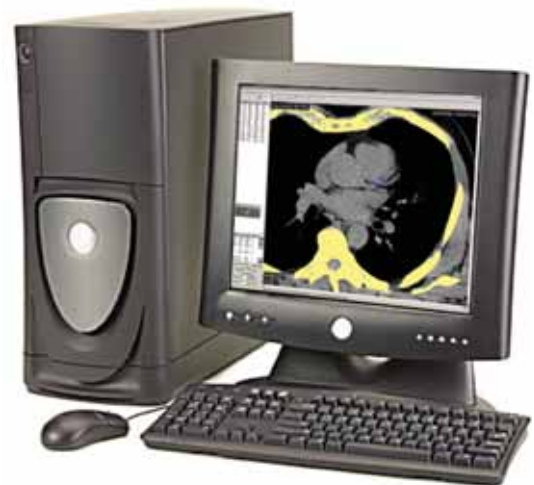
Cedara's CalScore software is a leading edge solution for radiologists, cardiologists and other specialists working in the field of cardiac screening. Including a wide selection of easy-to-use, yet powerful diagnostic tools, CalScore is a solution designed by Cardiovascular Specialists for Cardiovascular Specialists. Depending on your needs, CalScore can be fully integrated into PACS reporting workstations.

Calcium Scoring for Cardiovascular Specialists

To directly address the needs of Cardiovascular Specialists, CalScore was developed in cooperation with Dr. John Rumberger, a Clinical Professor of Medicine [Cardiology] at the Ohio State University and a former Chairman of the American Heart Association Committee on Cardiovascular Radiology. Using advanced technology, it supports lesion-by-lesion and side-by-side comparison for follow-up or repeat scanning.

Key functionality includes,

- Score arterial segments, as well as complete arteries
- Aortic Scoring
- Exclusive use of Dr. John Rumberger's Mass-based database
- Compare prior against current patient calcium scores
- Quickly generate reports in MS Word format
- Agatston, Volume, and Mass-based methods of calcium scoring.
- Allows Clinics to track current referral base
- DICOM Connectivity



Leading Edge Calcium Scoring

Powerful Features

Cedara CalScore includes a variety of features designed to provide a comprehensive portrait of coronary artery health including,

- Aortic Calcium Risk Factor
- Bone Mineral Density Risk Factor
- Framingham Risk Factor
- Exclusive use of Dr. Rumberger's Mass-based database
- Calcium Scoring & Risk Stratification based on Agatston, Volume or Mass

Extensive Decision Tree

Using customized report templates, CalScore includes a variety of recommendations for treatment based on total plaque burden. Recommendations can be reviewed and/or revised by reading cardiologists or radiologists prior to publishing. In total, there are 10 sets of recommendations based on the following criteria:

- Symptomatic or asymptomatic
- Total calcium score
- Presence or absence of aortic calcification

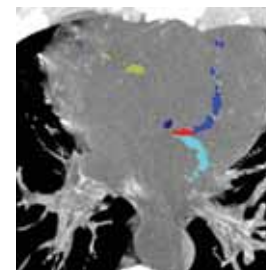
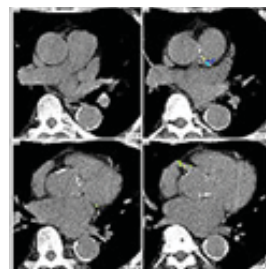
Some of CalScore's sample recommendations include:

- "The CT examination has shown a high and rather extensive measurable coronary atherosclerotic plaque burden."
- "Areas of mild non-obstructive coronary narrowing are very likely to be present, and based on observational studies there is at least a 50% chance that there is a low limiting stenosis."
- "The patient's body mass index (BMI) is 28.4. A BMI >25 and <30 is classified as overweight. This is a modifiable risk factor and modest weight loss is suggested and can be achieved via a combination of diet and regular exercise."

Comprehensive Report Generation

Following examination and diagnosis, Cedara CalScore automatically generates a report based on the following criteria:

- Calcium score percentile information based on age and gender
- Framingham risk factor adjusted for coronary calcium "age"
- ACE/All intake (if presence and/or history of hypertension)
- Non-invasive index (classification of symptomatic patients)
- Presence or absence of hypertension (and/or history of)
- Bone mineral density risk factor, obtained from any OEM BMD package (purchased separately)
- Daily aspirin and antioxidant intake
- Cholesterol levels and medication
- Presence or absence of diabetes
- Evolution of total calcium volume
- Previous total calcium score
- Current or former smoker
- First or follow-up study
- Aortic calcification
- Body Mass Index
- Exercise level
- Family history



For OEM companies, Cedara CalScore is available as a standalone workstation or can be tightly integrated into existing PACS solutions using Cedara's unique C4 integration platform.